

0.404 ACRES
BRAY-SPAAR PARTNERSHIP

**CITY OF
Marble Falls
TEXAS**

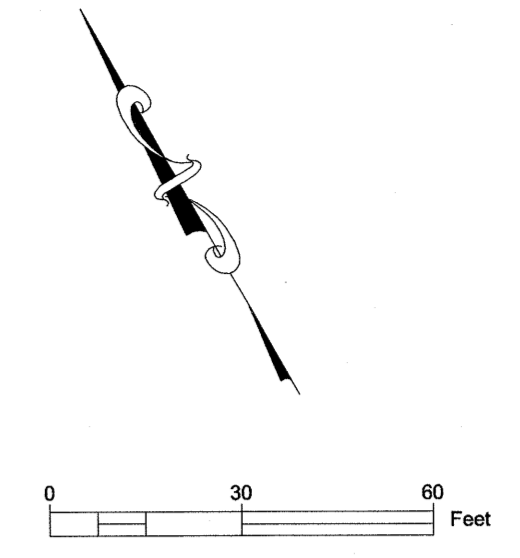
Development Services Department
All construction shall meet the adopted codes and ordinances of the City of Marble Falls and all applicable state and federal laws. Any deviations from this set of plans must be approved by the City of Marble Falls.

Approved Reviewer: *Mike Ingalls*

1.719 ACRES
BRAY-SPAAR PARTNERSHIP
476/784 O.P.R.B.C.T.

**Willis Environmental
Engineering, Inc.**
CONSULTING ENGINEERS

310 MAIN STREET, MARBLE FALLS, TEXAS 78654
• (800) 695-3888 • FAX (800) 695-3382 • e-mail: tonyp@willisenv.com

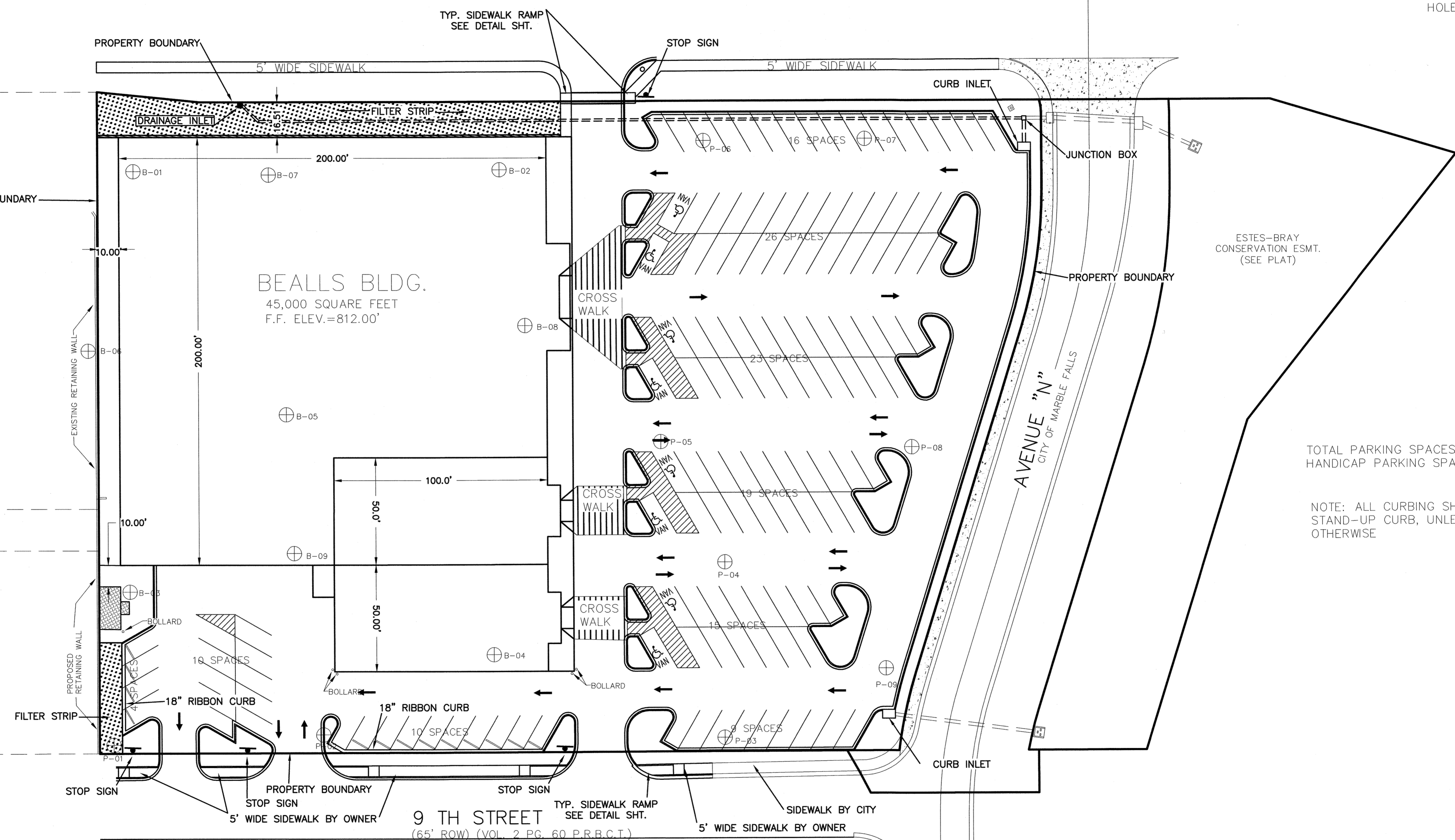


NOTE:
⊕x-xx DENOTES APPROXIMATE BORE HOLE LOCATION, SEE ATTACHED GEOTECH REPORT FOR BORE HOLE INFORMATION.

FM HWY 1431

BLUEBONNET DRIVE

LOT 7
RESUBDIVISION OF NORTHWOOD TERRACE
SECTION "B"
VOLUME 2 PAGE 60 B.C.P.R.
CABINET 1 SLIDE 64B B.C.P.R.
HIGHLAND LAKES FURNITURE CENTER, INC.
196/545 O.P.R.B.C.T.



9 TH STREET
(65' ROW) (VOL. 2 PG. 60 P.R.B.C.T.)

JEFFREY L. FORD
1439/578 O.P.R.B.C.T.

DATE	3-30-16
BY	LDN
REVISIONS	
No.	1
REVISED PER CITY COMMENTS	
DRAWN BY	LDN
CHECKED BY	WAP
ISSUE DATE	MARCH 2016

**BEALLS
CITY OF MARBLE FALLS**

SITE PLAN

SEAL

WILLIS ENVIRONMENTAL ENGINEERING, INC.
WILLIAM A. WILLIS
89777
LICENSED PROFESSIONAL ENGINEER

3/31/2016

JOB No.

150901

SCALE:

1" = 30'

SHEET No. of SHEETS

SITE 1